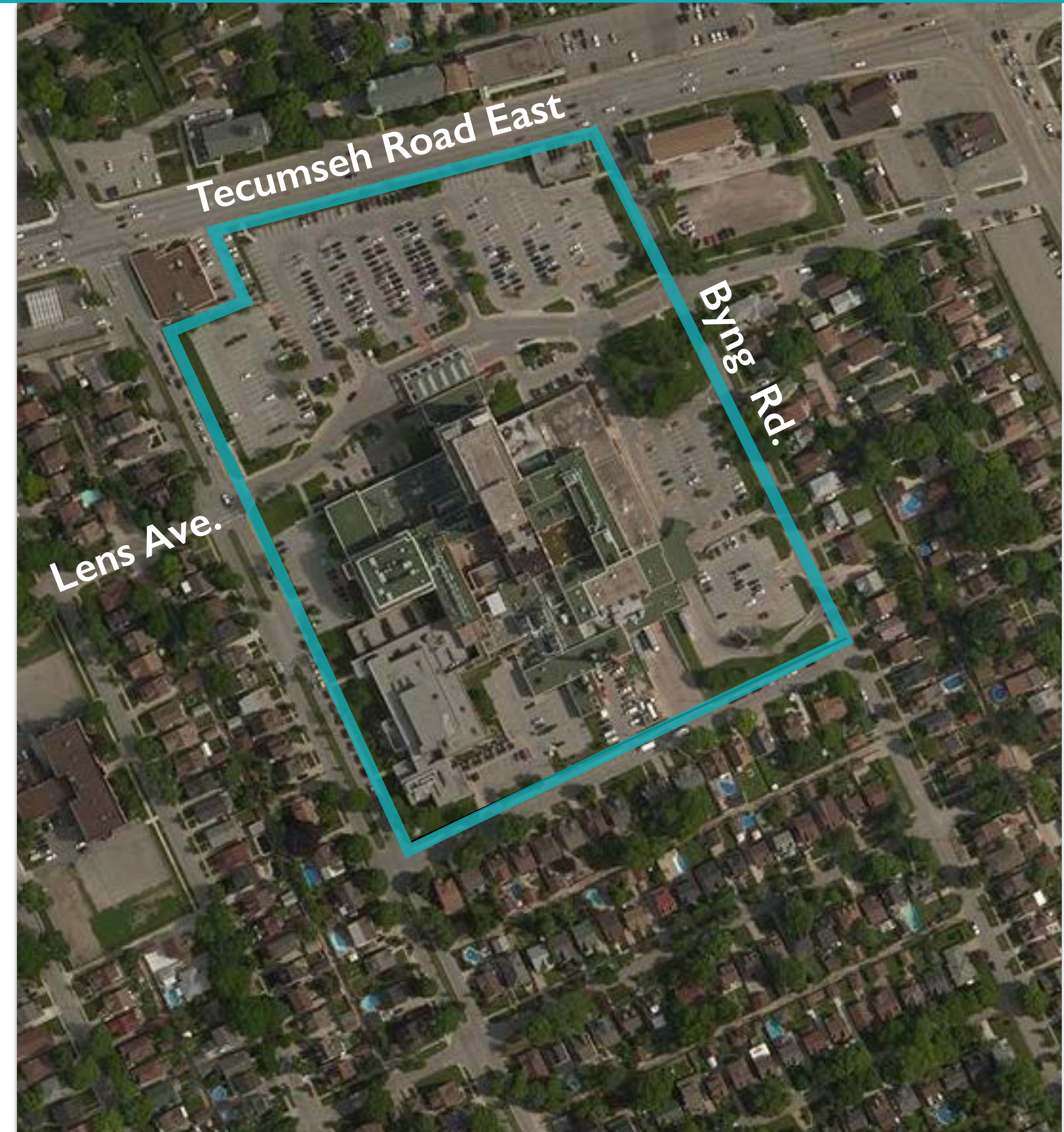


Windsor Regional Hospital, Met Campus 1995 Lens Ave.

THE PLAN:

- ▶ WRH will transfer a clean site to The City of Windsor in exchange for the former Grace Hospital site
- ▶ This will allow The City of Windsor to control future development on the site
- ▶ The City of Windsor will have a blank canvas to enable future development that respects the characteristics of a vibrant and well-established residential neighbourhood and commercial corridor





“Realizing that the future hospital and healthcare system is a major initiative and priority for Windsor-Essex, this investment will drive new opportunities for employment, economic development and improved access to care that this region needs and can capitalize upon.”

- Matt Marchand

President and CEO, Windsor-Essex Chamber of Commerce

