



May 3, 2010 | VOLUME IV |

WESTERN CAMPUS SPECIAL EDITION

Short –Term Pain for Long Term Gain!

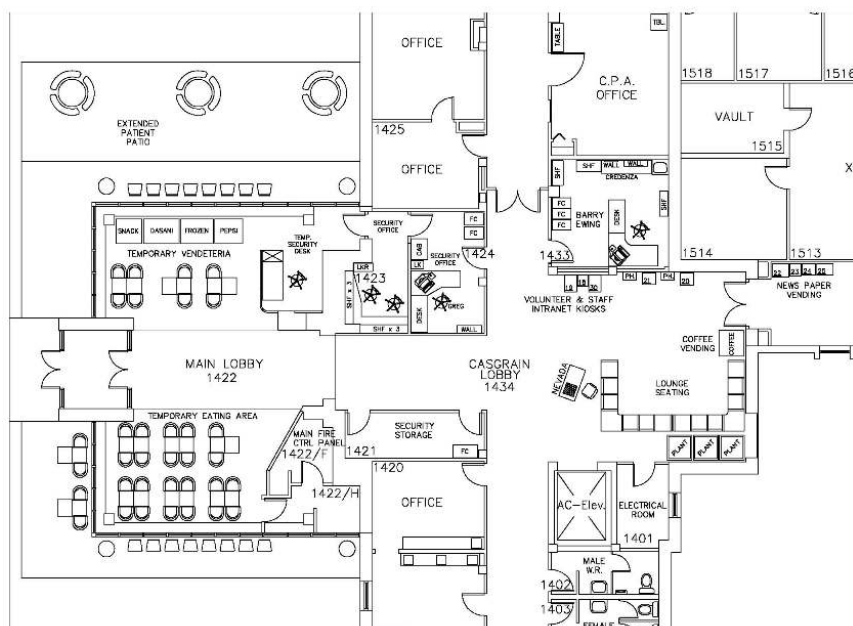
As we progress with the Western Redevelopment Project, a number of changes will be taking place over the next few weeks and months. Everyone is asked to be patient and accommodating as we make these necessary changes to ultimately improve patient care.

Western WE CARE Café

The cafeteria at the Western Campus currently located in the Tower building will be moving to the Malden Park Building . This transition will take place between May 25th and June 1, 2010. During this transition food and drink will be available but service and location may vary accordingly as equipment is moved to the new location. **The Café will close on May 31, 2010 at 7 pm and re-open on Tuesday, June 1st, 2010 at the Malden Park Building.** A vending/sitting area will be established in the Casgrain entrance. There will be seating and vending machines. Staff are asked to ensure that there is adequate seating for patients and their families as we make changes during this transition.

Western Gift Shop

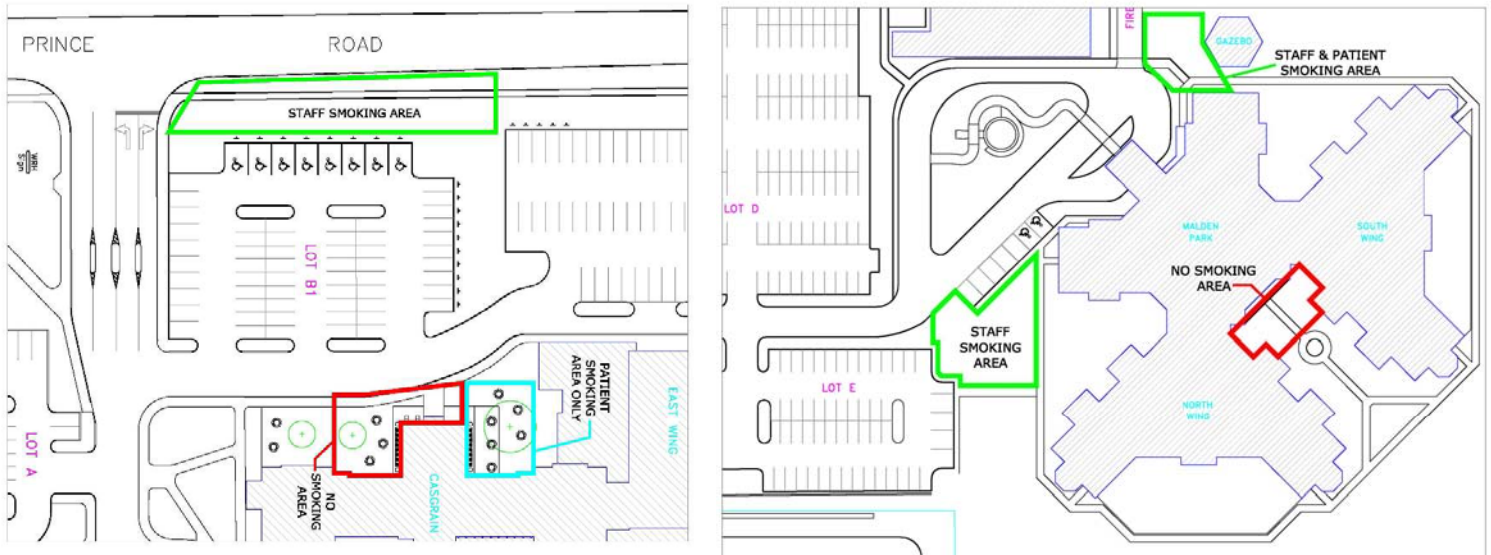
The Western Gift Shop will be temporarily relocated to the first floor of the Malden Park building. It will close on Tuesday, May 25th and re-open at Malden Park on Monday, May 31, 2010.



OUR MISSION: We provide outstanding care with compassion.

Smoking

As a result of the Western Re-Development and the closure of the current main entrance to the tower, designated smoking areas at the Western campus need to change. A smoking area outside of the Casgrain entrance will be established **for patients only**. Staff that wish to smoke need to do so on the sidewalk on Prince Road. At Malden Park the Courtyard near patient rooms will be non-smoking. The only staff designated smoking area at Malden Park will be - 9 meters from the front entrance.



ATM Machine

The ATM machine will be located near the tower elevators.

Volunteer Help Desk and Nevada Ticket Desk

The Volunteer Help Desk will relocate to the Casgrain Lobby. It is manned Monday through Friday mornings. Volunteers at the Help Desk can be reached by calling ext. 72054. Nevada tickets will also be sold in the Casgrain Lobby.

Volunteer Kiosk and Intranet Kiosk

Volunteers will sign in at their Kiosk relocated in the Casgrain lobby. Staff will still be able to access the Intranet Kiosk which will also be relocated to the Casgrain Lobby.

Vendors

Vendors will be temporarily relocated. Watch for more information.

If you have a questions regarding these changes, please contact Rose Deluca at ext 75146.

The Tribune is a publication of the Public Affairs Department of Windsor Regional Hospital. Submissions can be made to gisele_sullens@wrh.on.ca or by calling ext. 52008.